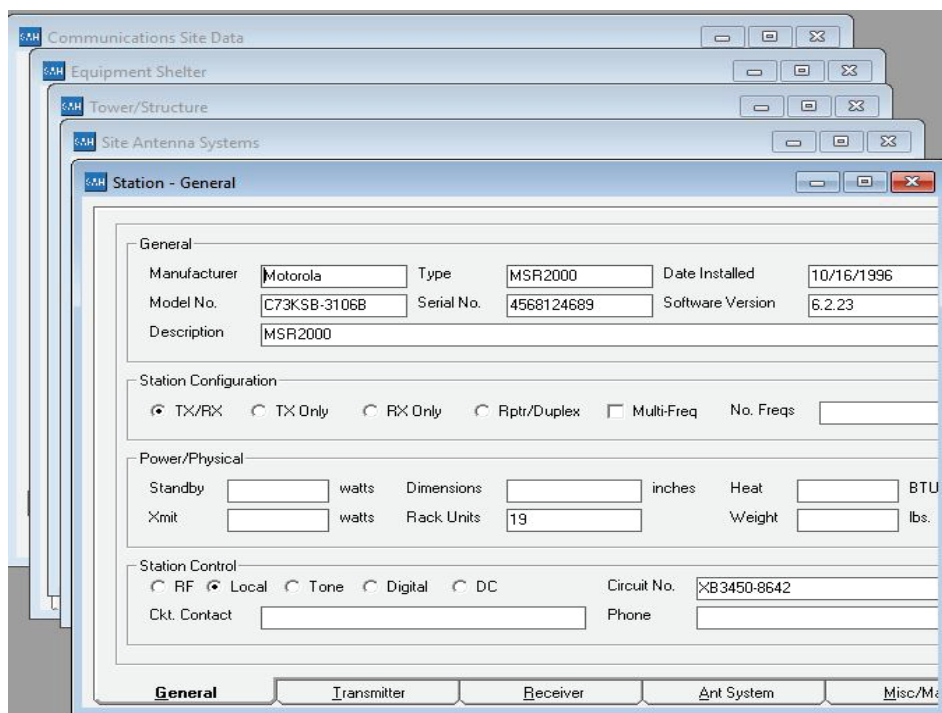




**Save Time and Money
Managing Wireless
Communication Sites!**

WirelessSite-SAM (WS-SAM) is a comprehensive database manager that organizes all of your wireless communications site information. No more searching through piles of papers and "sticky notes" for site information.



WS-SAM helps you organize site information and it is just a "key press" or "mouse click" away. You will be able to readily track and access the following information:

- Tower/Structure information
- Fixed equipment information and inventory
- Field equipment information and inventory
- Antenna locations
- Tower space inventory
- RF frequencies
- Transmission lines
- Filter and multicoupling systems
- Wireline/T1/Microwave circuit numbers
- FCC Call Signs, Licenses and expiration dates
- FAA data
- Contacts and phone numbers
- Site access/keys/codes
- Tenants/Agreements/Leases
- Site expenses
- Facility electrical and standby power
- Maintenance records and costs
- Task scheduler and reminder alarms
- And many others

You can link individual radio system components together such as antennas, transmission lines, base stations, maintenance personnel, etc. This feature allows you to display and print how each component is interconnected.

WS-SAM can operate as a stand-alone software application or it can operate with our popular WirelessSite-RFI (WS-RFI) sharing common data. WS-RFI is a communications site radio interference analysis application. It allows you to perform transmitter noise, receiver desensitization, and intermodulation interference analysis at communication sites.

Integrating both of these applications together will provide the site designer/manager a comprehensive communications site management and interference analysis application.

Whether you are responsible for a single wireless communications site or a nationwide communications network with hundreds of sites, this application will save you countless hours of work and frustration.

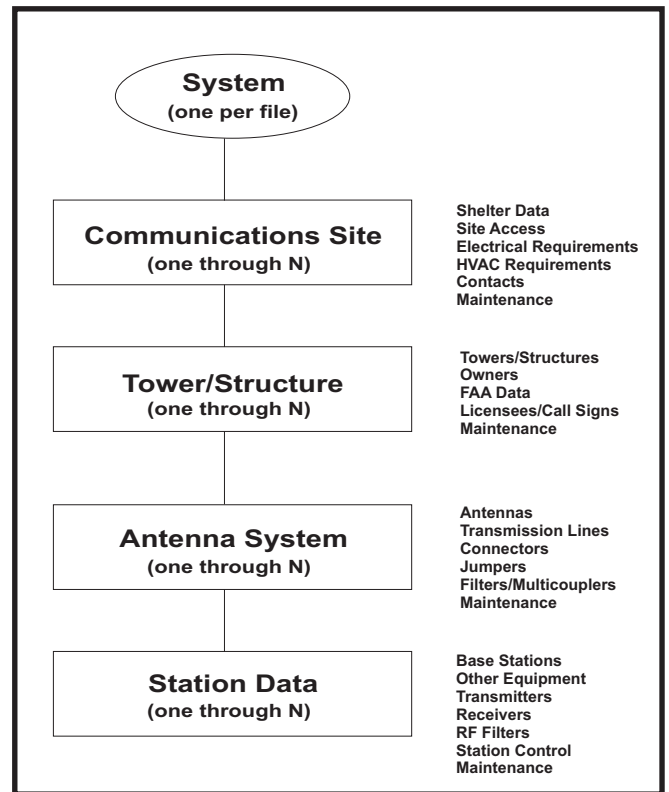
Find Your Communications Site Information In Seconds - Not Hours!

Relational Database System

WS-SAM is a flexible relational database management system for Microsoft Windows. The database engine is designed to give you unparalleled access to data, combined with the ease-of-use made possible with Windows.

The figure to the right shows the database hierarchy and how each component can be linked together. The highest level of linking is the communications system. You can have one system per database. Within each database file, you can have one or as many sites as you need. Shelters, towers, antenna systems and base stations are below the site level and you can have an unlimited number of these components as well.

Every component in the database can be linked (related) to other components. This linking provides a powerful method of keeping track of each component of a communications system as well as indicating how the components are interconnected.



Just Click For Information

Information is just a mouse click away. The screen views on the front of this brochure and below provide you with examples of how your information is organized and displayed. Ample use of option and command buttons allow you to perform most database activities with a simple point-and-click operation.

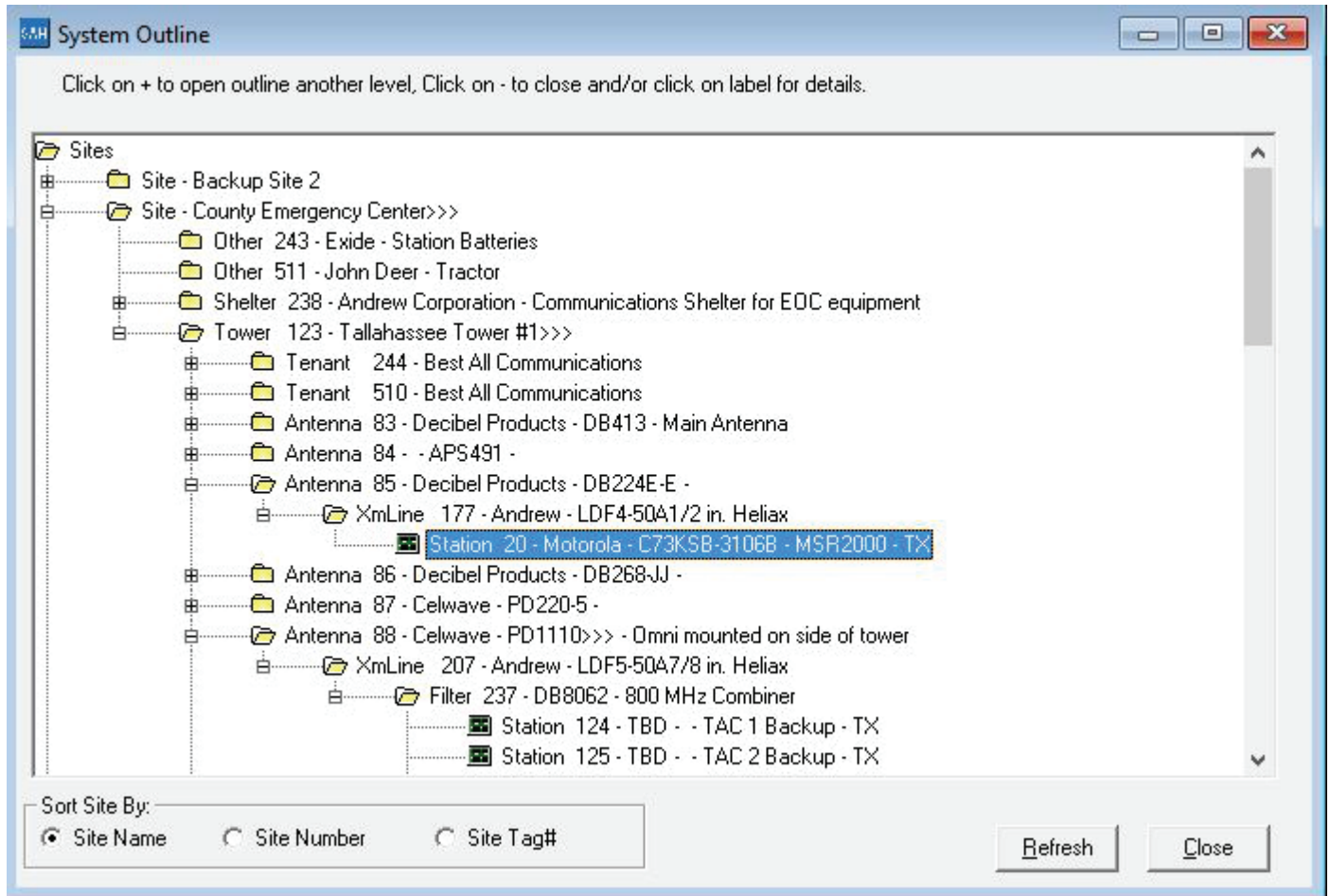
Related data is presented in small chunks so you are not overwhelmed with information. Page tabs are utilized to further reduce the amount of information on which to focus. For example, the Tenant form below has pages for general information, lease, financial, equipment and miscellaneous information. There is even a page that allows you to create custom fields for data that does not fit the predefined categories.

Task Scheduler and Alarms

The Task Scheduler prevents missed dates for important actions such as equipment preventative maintenance schedules, FCC license expirations, FAA submittals and follow up, appointments and other "date" sensitive items.

Each time you open the Site database, the application searches a schedule and alarm database and looks for any events that you previously set to remind you. When an event is found, a popup window is displayed on the screen. Continued notification is provided until it is cleared.

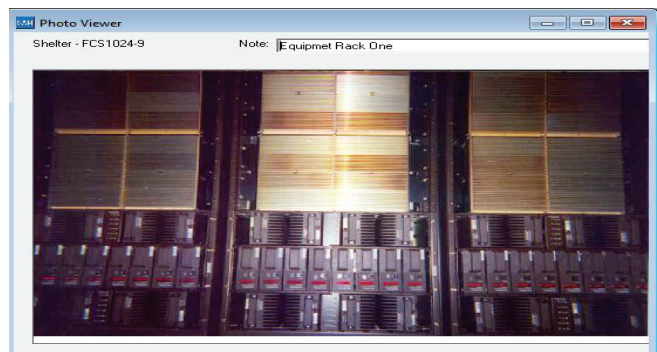
Find Your Communications Site Information In Seconds - Not Hours!



System Outline View

WS-SAM provides a hierarchical view of all components at the communications site. Each item can have linked subordinate items which are visually represented by indentation levels.

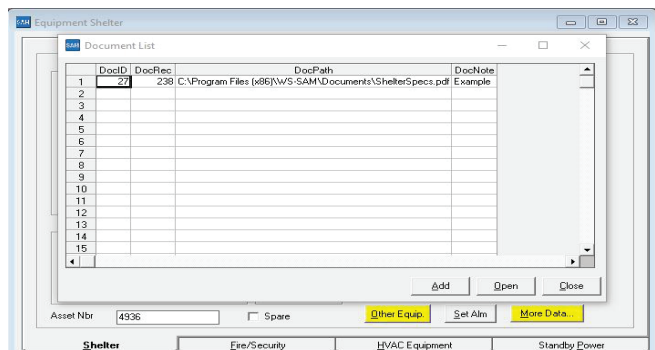
By expanding the list, all associated items are displayed. You can drill-down to all linked items by clicking on the plus (+) symbols. Right-click on an item, and further details will be displayed in a separate window allowing viewing or editing the component..



Store Photos and Documents

WS-SAM provides a feature to store photographs and documents for all communications site components. The photographs/images are stored in the database.

External Documents can be linked to all components in the database. They can be Adobe PDF and Microsoft Word formats.



Find Your Communications Site Information In Seconds - Not Hours!

Report Viewer (C:\Program Files (x86)\WS-SAM\Reports\Antenna.rpt)

File View

Print... 100% 1/3 Back Forward

Antenna Equipment (Sorted by Tag#)

AntID	Mfr	Model	Type	Description	Gain	FreqRz	LevH	Ant
83	Decibal	DB413	OFFSET	Main Antenna	12.00	406-512	18.33	150
84		AP6491						150
85	Decibal	DB224E-E	OFFSET		9.00	138-174	21.25	150
86	Decibal	DB268-FJ	OMNI		9.00	220-222	42.17	150
87	Caltrave	FD220-S	OMNI		5.25		22.00	150
88	Caltrave	FD1100>>>	OMNI	Omni mounted on side of tower	9.00	806-960	13.17	150
89	Decibal	DB413	OFFSET		12.00		18.33	150
90	Caltrave	FD1107	OMNI		3.00	150-174	10.90	150
91	Caltrave	FD220	OMNI		5.25		22.00	150
92	Decibal	DB224E	OFFSET	Special mounting bracket to extend 10 feet off tower	9.00		21.25	150
93	Decibal	DB212-C	DIRECTIONAL		0.00	42-50	15.00	150
94	Decibal	DB212-B	DIRECTIONAL		0.00	33-42	22.00	150
95	Decibal	DB222-A	OMNI		3.00		10.38	150
96	Decibal	DB220-B	OMNI		9.20		18.00	150
97	Caltrave	FD1110	OMNI		9.00	806-960	13.17	150
98	Decibal	DB224>>>	DIRECTIONAL	Backup				125
99	Caltrave	FD201-1.or	OMNI		5.00		7.75	125
100	Caltrave	FD320-2	DIRECTIONAL		2.50	40-54	13.00	125
101	Caltrave	FD1107	OMNI		3.00	10.90	125	125

Maintenance

Date: 9/1/2015 Model No.: B24-85

Equip. Tag#: 239 Serial No.: EX4532

Cost: \$555.00 Technician: Smitty

Maintenance Description: Shelter Station Batteries

Buttons: Delete, Update, Table, Close

Presentation Quality Reports

WS-SAM provides a powerful yet easy to use report generator and search engine. You are able to query the database and provide information in well organized formats for review and distribution.

WS-SAM includes many report templates for creating "instant reports" with a few simple button clicks. You can obtain reports for all components in the database as well as how the components are linked to each other.

Searching and reporting is made easy. It is not necessary to learn some cryptic SQL language to create custom reports. You can set up the report criteria by simple point-and-click operations.

The real power of WS-SAM is the ability to see the data you want, in the order you want to see it. Create custom reports based upon your own search criteria. What are the names of all of our maintenance providers? How much money is spent with each provider? What is the spare equipment at each site? How much money is invested in spare equipment at all the communication sites? After WS-SAM retrieves the data that answers your question(s), you can view and analyze the data. View the data on screen, then send it to a printer or file.

Export your reports to a number of popular spreadsheet, word processor formats, and into a number of common data interchange formats as well. For example, you may want to use report data to project maintenance costs in a spreadsheet package. You could also provide equipment inventory values to the accounting department for insurance coverage evaluation.

Distribute your reports quickly and easily by delivering them via e-mail. Electronic distribution maximizes efficiency by eliminating print queues and reducing paper use.

Maintenance Records

Create equipment maintenance records and set reminders to perform future preventative maintenance procedures on the equipment. Each time you Open the communications site database, the application will check if there are any maintenance procedures that are due and prompt you.

System Requirements

System requirements vary with the WS-SAM configuration you purchase. The basic minimum requirements are listed below:

- + Pentium III, 1 GHz processor or equivalent.
- + Windows 7 or higher.
- + 1 GB of RAM.
- + 60 MB minimum hard disk space.
- + SVGA monitor.
- + CD-ROM drive.
- + A printer supported by Windows.

We Also Offer...

- + Custom software design and development.
- + Wireless site RFI Interference analysis software.
- + Non-Ionizing Radiation (MPE) analysis software.
- + Communications system consultation services.
- + RF basic online training.
- + Software application online training.



1295 South Sauty Road
Langston, AL 35755
Phone: 256-582-9652

U.S. Veteran Owned Business

www.RiverviewSoftwareSolutions.com